

**FEATURES**

- Bartenbach 'Dark Light' technology
- Low UGR levels combined with high light output
- Individual PSU 1-10V & Push on request

**Bartenbach**  
lighting optics



**SPRINGS**

Standard with CS spring (concrete/gyproc). Also available as above with WS spring (gyproc/metal).

**COLOURS**

Available colours:



Matt white RAL 9016 (XX=MW)  
Matt black RAL 9005 (XX=BL)

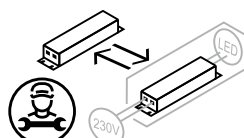
# Fluxe 50

Adjustable

## SPECIFICATIONS

Beam angle (FWHM)	40° (65° FWTM)
Fixture material	Housing: Die cast aluminium / Reflector glass: Polycarbonate
Environment	Indoor
IK rate	IK03
Operating temperature (Ta)	-20°C / +45°C 1
Safety marks	EN60598 / EN62031 / EN62471
EMC compliance	EN55015
Colour consistency (SDCM)	MacAdam step 3
Warranty	7 years * (within the European Union and the countries of the Free Trade Association for products delivered after 1 May 2015)
Energy class	These products contain a light source of energy efficiency class F (2700K/3000K) / E (4000K)

This luminaire contains built-in LED lamps. There are no exchangeable parts inside the luminaire. EU 874/2012

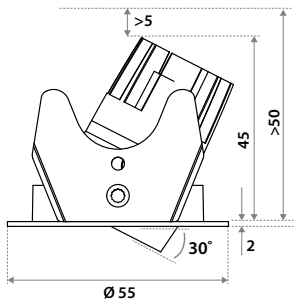


IP20

FLUXE 50 VARIATIONS

Fluxe 50 LV	CRI93 220-240V	incl. power supply	page 3
Fluxe 50 LVC	CRI93 500mA	to be connected to a central power supply	page 4
Fluxe 50 LV	CRI82 220-240V	incl. power supply	page 5
Fluxe 50 LVC	CRI82 500mA	to be connected to a central power supply	page 6

DIMENSIONS



CUT-OUT



Using CS springs: Ø 50 mm.  
Thickness ceiling 5-50 mm  
& recess depth 50 mm.

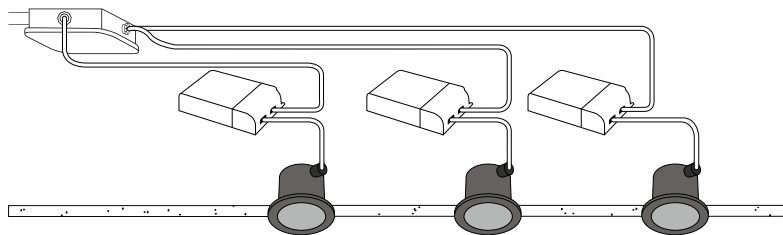


Using WS springs: Ø 50 mm.  
Thickness ceiling 1-20 mm  
& recess depth 50 mm.

## FLUXE 50 (dimmable - incl. individual power supply)

**CRI93 / 220-240V**

Downlight incl. PSU



### ITEM SPECIFICATIONS (PART A)

Description	Item code CS	Item code WS	Input	W	Lm	Lm/W	CRI (typ.)	UGR	Pf	Ripple	Inrush current	B-16A Fuse
Fluxe 50 adj LV 450Lm 2700K Triac dim	863Z03XX0102	863Z03XX1A02	220-240V	6.6	450	69	93	14.8	0.96	<20%	2A 50μS	50 pcs
Fluxe 50 adj LV 475Lm 3000K Triac dim	863Z03XX7202	863Z03XX2A02	220-240V	6.6	475	73	93	15.0	0.96	<20%	2A 50μS	50 pcs
Fluxe 50 adj LV 500Lm 4000K Triac dim	863Z03XX0202	863Z03XX3A02	220-240V	6.6	500	76	93	15.2	0.96	<20%	2A 50μS	50 pcs
Fluxe 50 adj LV 450Lm 2700K Dali	863Z03XXS402	863Z03XXS702	220-240V	6.6	450	69	93	14.8	0.95	<20%	2A 50μS	50 pcs
Fluxe 50 adj LV 475Lm 3000K Dali	863Z03XXS502	863Z03XXS802	220-240V	6.6	475	73	93	15.0	0.95	<20%	2A 50μS	50 pcs
Fluxe 50 adj LV 500Lm 4000K Dali	863Z03XXS602	863Z03XXS902	220-240V	6.6	500	76	93	15.2	0.95	<20%	2A 50μS	50 pcs

### ITEM SPECIFICATIONS (PART B)

Description	Safety class	Energy class	Weight	Dimensions single carton	Quantity per carton	Expected Lifetime			Reported Lifetime*		
						L70B10	L80B10	L90B10	L70B10	L80B10	L90B10
Fluxe 50 adj LV 2700K CRI93	II	F	188 gr	105x105x61 mm	42 pcs	177.000 hrs	113.000 hrs	51.000 hrs	>102.000 hrs	>102.000 hrs	51.000 hrs
Fluxe 50 adj LV 3000K CRI93	II	F	188 gr	105x105x61 mm	42 pcs	177.000 hrs	113.000 hrs	51.000 hrs	>102.000 hrs	>102.000 hrs	51.000 hrs
Fluxe 50 adj LV 4000K CRI93	II	E	188 gr	105x105x61 mm	42 pcs	177.000 hrs	113.000 hrs	51.000 hrs	>102.000 hrs	>102.000 hrs	51.000 hrs

All values are measured at 230V (+/- 7%). \*Based on 17.000hrs of LM80 testing at 700mA and a Tc85 °C.

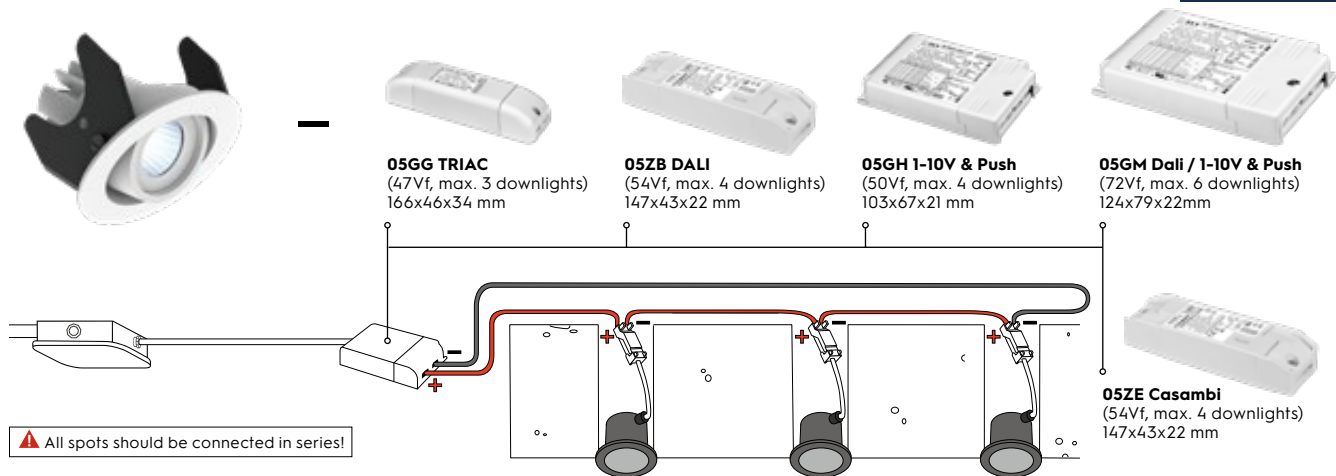
### INCL. PSU

PSU TCI 127042 Triac dim 102x38x21 mm  
PSU TCI 127576 Dali 147x44x22 mm



**FLUXE 50** (dimmable - excl. central power supply)

**CRI93 / 500 mA**



**ITEM SPECIFICATIONS (PART A)**

Description	Item code CS	Item code WS	Input	Vf	W	Lm	Lm/W	CRI (typ.)	UGR	Pf	Ripple	Inrush current	B-16A Fuse
Fluxe 50 adj LVC 500mA 450 Lm 2700K CRI93 Dim	863Z03XX01E2	863Z03XX1AE2	500mA	11,9	5.7	450	79	93	14.8	x	x	x	x
Fluxe 50 adj LVC 500mA 475 Lm 3000K CRI93 Dim	863Z03XX72E2	863Z03XX2AE2	500mA	11,9	5.7	475	83	93	15.0	x	x	x	x
Fluxe 50 adj LVC 500mA 500 Lm 4000K CRI93 Dim	863Z03XX02E2	863Z03XX3AE2	500mA	11,9	5.7	500	88	93	15.2	x	x	x	x

**ITEM SPECIFICATIONS (PART B)**

Description	Safety class	Energy class	Weight	Dimensions single carton	Quantity per carton	Expected Lifetime			Reported Lifetime*		
						L70B10	L80B10	L90B10	L70B10	L80B10	L90B10
Fluxe 50 adj LVC 500mA 2700K CRI93	III	F	138 gr	105x105x61 mm	42 pcs	177.000 hrs	113.000 hrs	51.000 hrs	>102.000 hrs	>102.000 hrs	51.000 hrs
Fluxe 50 adj LVC 500mA 3000K CRI93	III	F	138 gr	105x105x61 mm	42 pcs	177.000 hrs	113.000 hrs	51.000 hrs	>102.000 hrs	>102.000 hrs	51.000 hrs
Fluxe 50 adj LVC 500mA 4000K CRI93	III	E	138 gr	105x105x61 mm	42 pcs	177.000 hrs	113.000 hrs	51.000 hrs	>102.000 hrs	>102.000 hrs	51.000 hrs

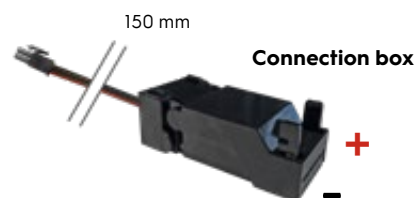
**ITEM SPECIFICATIONS (PART A)**

Description	Item code	Input	Watt	Current	Efficiency	Pf	Ripple	Weight	Inrush current	B-16A Fuse
PSU 24W 500mA Triac	05GG03MLME00	220-240V	24W (47Vf)	500mA	85%	0.97	<3%	138 gr	5A 50μS	50 pcs
PSU 27W 500mA Dali	05ZB03MLME00	220-240V	27W (54Vf)	500mA	89%	0.95	<3%	139 gr	5A 50μS	50 pcs
PSU 25W 500mA 1-10V & Push	05GH03MLME00	220-240V	25W (50Vf)	500mA	88%	0.95	<3%	138 gr	5A 50μS	50 pcs
PSU 27W 500mA Casambi	05ZE03MLME00	220-240V	27W (54Vf)	500mA	89%	0.95	<3%	139 gr	5A 50μS	50 pcs
PSU 35W 500mA Dali / 1-10V & Push	05GM03MLME00	220-240V	35W (72Vf)	500mA	89%	0.95	<3%	218 gr	10A 200μS	30 pcs

All values are measured at 230V (+/- 7%).\*Based on 17.000hrs of LM80 testing at 700mA and a Tc85 °C.

**INCLUDING CONNECTION BOX**

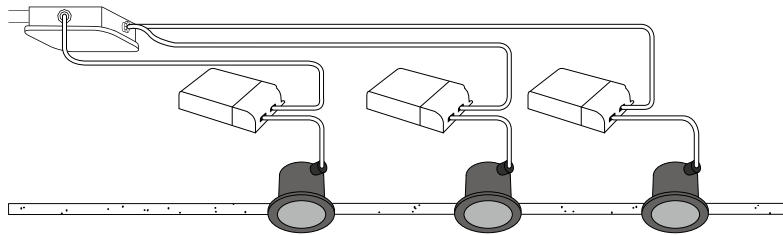
For installation to a central power supply.



## FLUXE 50 (dimmable - incl. individual power supply)

**CRI82 / 220-240V**

Downlight incl. PSU



### ITEM SPECIFICATIONS (PART A)

Description	Item code CS	Item code WS	Input	W	Lm	Lm/W	CRI (typ.)	UGR	Pf	Ripple	Inrush current	B-16A Fuse
Fluxe 50 adj LV 475Lm 2700K CRI82 Triac dim	861A03XX0102	861A03XX1A02	220-240V	6.6	475	72	82	15.0	0.96	<20%	2A 50μS	50 pcs
Fluxe 50 adj LV 500Lm 3000K CRI82 Triac dim	861A03XX7202	861A03XX2A02	220-240V	6.6	500	76	82	15.2	0.96	<20%	2A 50μS	50 pcs
Fluxe 50 adj LV 525Lm 4000K CRI82 Triac dim	861A03XX0202	861A03XX3A02	220-240V	6.6	525	80	82	15.4	0.96	<20%	2A 50μS	50 pcs
Fluxe 50 adj LV 475Lm 2700K CRI82 Dali	861A03XXS402	861A03XXS702	220-240V	6.6	475	72	82	15.0	0.95	<20%	2A 50μS	50 pcs
Fluxe 50 adj LV 500Lm 3000K CRI82 Dali	861A03XXS502	861A03XXS802	220-240V	6.6	500	76	82	15.2	0.95	<20%	2A 50μS	50 pcs
Fluxe 50 adj LV 525Lm 4000K CRI82 Dali	861A03XXS602	861A03XXS902	220-240V	6.6	525	80	82	15.4	0.95	<20%	2A 50μS	50 pcs

### ITEM SPECIFICATIONS (PART B)

Description	Safety class	Energy class	Weight	Dimensions single carton	Quantity per carton	Expected Lifetime B10 reported (25°C)		
						L70B10	L80B10	L90B10
Fluxe 50 adj LV 475Lm 2700K CRI82	II	F	188 gr	105x105x61 mm	42 pcs	>60.000 hrs	>60.000 hrs	>60.000 hrs
Fluxe 50 adj LV 500Lm 3000K CRI82	II	F	188 gr	105x105x61 mm	42 pcs	>60.000 hrs	>60.000 hrs	>60.000 hrs
Fluxe 50 adj LV 525Lm 4000K CRI82	II	E	188 gr	105x105x61 mm	42 pcs	>60.000 hrs	>60.000 hrs	>60.000 hrs

All values are measured at 230V (+/- 7%)

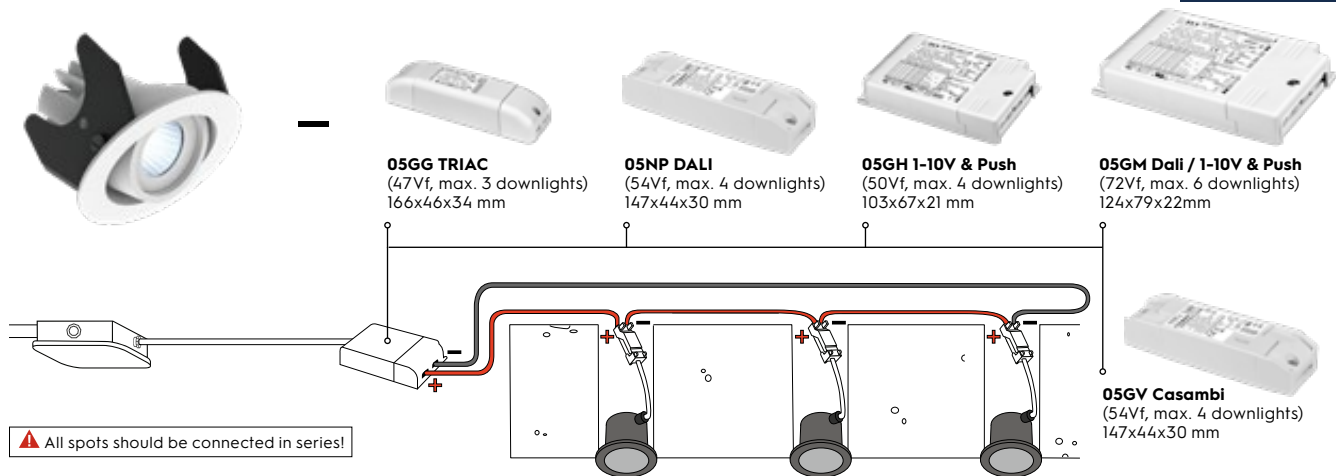
### INCL. PSU

PSU TCI 127042 Triac dim 102x38x21 mm  
PSU TCI 127576 Dali 147x44x22 mm



**FLUXE 50** (dimmable - excl. central power supply)

**CRI82 / 500 mA**



**ITEM SPECIFICATIONS (PART A)**

Description	Item code CS	Item code WS	Input	Vf	W	Lm	Lm/W	CRI (typ.)	UGR	Pf	Ripple	Inrush current	B-16A Fuse
Fluxe 50 adj LVC 500mA 475 Lm 2700K CRI82 Dim	861A03XX01E2	861A03XX1AE2	500mA	11,9	5,7	475	83	82	15.0	x	x	x	x
Fluxe 50 adj LVC 500mA 500 Lm 3000K CRI82 Dim	861A03XX72E2	861A03XX2AE2	500mA	11,9	5,7	500	88	82	15.2	x	x	x	x
Fluxe 50 adj LVC 500mA 525 Lm 4000K CRI82 Dim	861A03XX02E2	861A03XX3AE2	500mA	11,9	5,7	525	92	82	15.4	x	x	x	x

**ITEM SPECIFICATIONS (PART B)**

Description	Safety class	Energy class	Weight	Dimensions single carton	Quantity per carton	Expected Lifetime B10 reported (25°C)		
						L70B10	L80B10	L90B10
Fluxe 50 adj LVC 500mA 475 Lm 2700K CRI82 Dim	III	F	138 gr	105x105x61 mm	42 pcs	>60.000 hrs	>60.000 hrs	>60.000 hrs
Fluxe 50 adj LVC 500mA 500 Lm 3000K CRI82 Dim	III	F	138 gr	105x105x61 mm	42 pcs	>60.000 hrs	>60.000 hrs	>60.000 hrs
Fluxe 50 adj LVC 500mA 525 Lm 4000K CRI82 Dim	III	E	138 gr	105x105x61 mm	42 pcs	>60.000 hrs	>60.000 hrs	>60.000 hrs

**ITEM SPECIFICATIONS (PART A)**

Description	Item code	Input	Watt	Current	Efficiency	Pf	Ripple	Weight	Inrush current	B-16A Fuse
PSU 24W 500mA Triac	05GG03MLME00	220-240V	24W (47Vf)	500mA	85%	0.97	<3%	138 gr	5A 50μS	50 pcs
PSU 27W 500mA Dali	05NP03MLME00	220-240V	27W (54Vf)	500mA	90%	0.95	<3%	139 gr	5A 50μS	50 pcs
PSU 25W 500mA 1-10V & Push	05GH03MLME00	220-240V	25W (50Vf)	500mA	90%	0.95	<3%	138 gr	5A 50μS	50 pcs
PSU 27W 500mA Casambi	05GV03MLMD00	220-240V	27W (54Vf)	500mA	90%	0.95	<3%	139 gr	5A 50μS	50 pcs
PSU 35W 500mA Dali / 1-10V & Push	05GM03MLME00	220-240V	35W (72Vf)	500mA	89%	0.95	<3%	218 gr	20A 400μS	50 pcs

All values are measured at 230V (+/- 7%)

**INCLUDING CONNECTION BOX**

For installation to a central power supply.

